



2023

INFO PACKET



ABOUT INTERNATIONALS NETWORK

Internationals Network transforms education for immigrant and refugee English language learners by helping schools and districts better serve those students. We design new schools and programs within existing schools, coach leaders, teachers, and school staff, and provide access to an invaluable network of support and learning for those who work with us.

Our comprehensive approach works. As leaders, teachers, and school staff tailor their instruction, culture, structure, and leadership to effectively serve this population, the students are far more successful than their counterparts outside of our network—graduating at much higher rates.

MISSION

Our mission is to provide quality public education for recently arrived immigrants by growing and sustaining a strong national network of innovative International Schools, while sharing proven best practices and influencing policy for English Language Learners (ELLs) on a national scale.

VISION

International Network's vision is to ensure that all recent immigrant students who are English Language Learners have access to a quality school education that prepares them for college, career and full participation in democratic society, thereby opening doors to the American Dream.



Our Core Principles

Our schools are based on the Internationals Approach, a set of 5 Core Principles developed in our first schools, and proven successful through over 35 years of practitioner success with our students.



HETEROGENEITY + COLLABORATION

Schools and classrooms are heterogeneous and use collaborative structures that build on the strengths of each member of the school community to optimize learning.



EXPERIENTIAL LEARNING

Expansion of the 21st century schools beyond the four walls of the building motivates adolescents and enhances their capacity to successfully participate in modern society.



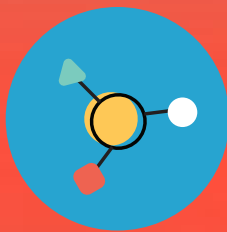
LANGUAGE + CONTENT INTEGRATION

Strong language skills develop most effectively in context and emerge most naturally in a purposeful, language rich, interdisciplinary, and experiential program.



LOCALIZED AUTONOMY + RESPONSIBILITY

Linking autonomy and responsibility at every level within a learning community allows all members to contribute to their fullest potential.



ONE LEARNING MODEL FOR ALL

All members of our school community work in diverse, collaborative groups on hands-on projects; put another way, the model for adult learning and student learning mirror each other.



Essential Practices

Internationals has developed a comprehensive approach to the education of immigrant and refugee multilingual learner youth that addresses the areas of a school's structure, pedagogy, culture, and governance that effectively serve them.



STRUCTURES

- Schools/academies small enough to foster personalization
- Interdisciplinary teams of teachers responsible for academic, linguistic and social-emotional development of shared student cohorts
- Significant, regularly scheduled time for interdisciplinary teams to collaborate & engage in professional learning
- Heterogeneous student grouping (by language, English levels, grade level)
- All students enrolled in credit-bearing core content classes required for graduation



GOVERNANCE

- Collaborative decision-making structures include school leadership & staff
- Faculty actively support their peers' professional learning
- District provides decision-making flexibility to school/academy leaders to implement essential components of model
- Faculty/staff participate in the larger community of practice in the network



CULTURE AND VALUES

- Collaboration & transparency among staff
- Staff plan intentionally to meet social emotional, academic, physical needs of their students
- Students' home languages/cultures are integrated into curriculum & beyond
- Belief in all students' abilities/equity in expectations for college & career
- Teachers' voices & input are encouraged and valued



PEDAGOGY, CURRICULUM + PD

- Experiential, student-centered, project based-learning
- Language & content integration in classes
- Both English & native language development are emphasized
- Scaffolding, differentiation & collaboration are key elements of all instruction
- Multiple forms of assessment are used, including performance-based
- Adult professional learning mirrors student learning



Our Impact

Students in our schools and academies are more successful than their district peers, graduating in higher numbers and attending colleges. We serve more than 8,500 immigrant and refugee youth across the U.S.



Francis Hammond International Academy

"The best thing about my school is how the teachers help us and how they allow us to create different clubs. I hope people remember me for my work with the leadership club and for helping students in my classes." - Abenizer



Oakland International High School

"I am planning to become a biomedical engineer and hopefully an apothecary as well. I am pretty confident I will achieve my goals thanks to the gift Oakland International High School has given to me - to learn how to learn. I hope people remember me as a cheerful and intelligent student." - Maritza



Bronx International High School

"Going to college is my first step and work toward a master's degree. While attending college, growing as an adult is also important. My goal is to become a successful actuary in America. Nothing is impossible. I got into my dream college." - Ming-Jie

NYC

79% vs. 58%

Internationals NYC schools 4 year graduation rate is 79% vs NYCDOE's ever ELL graduation rate

81% vs. 55%

Internationals NYC schools 6 year graduation rate is 81% vs NYCDOE's ever ELL graduation rate

CA BAY AREA

72% vs. 68%

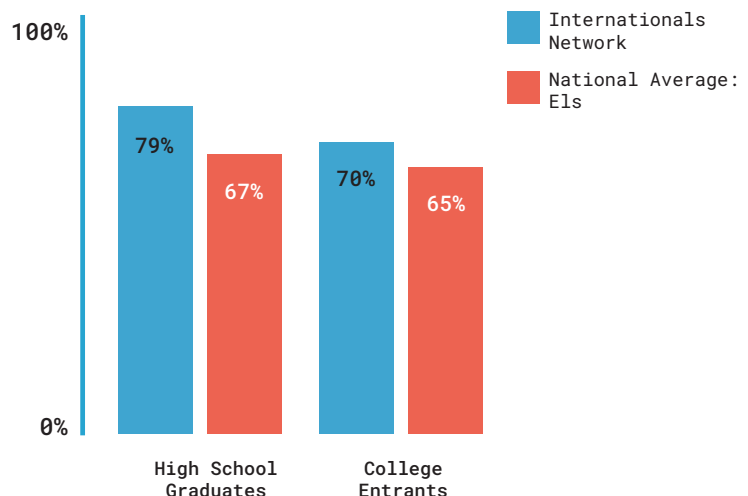
Internationals' Bay area schools 4 year graduation rate is 72% vs CA's ever ELL graduation rate of 68%

DC METRO AREA

82% vs. 59%

Internationals PGCPs schools 4 year graduation rate is 82% vs PGCPs' ever ELL graduation rate

GRADUATION & COLLEGE ENTRANTS RATES (2020)



What We Do

Internationals Network designs, develops, and supports schools and programs for recently-arrived immigrants and refugees. We provide ongoing support and opportunities for networked learning to over 900 school staff across the US. We do this at the national network level, within our three regional hubs, and directly with schools and districts.

NATIONAL NETWORK

Internationals regularly convenes educators across our entire network to come together to share, learn, and discuss promising practices serving immigrant multilingual students. This includes our Annual Leadership Retreat and Annual Professional Development Conference.

"I think the Internationals PDs are the most useful PDs for serving our student populations because everyone in the room has similar context and the facilitators design opportunities to share ideas across the network and share resources designed by INPS schools." - CA Bay Area Leader

REGIONAL NETWORK

Internationals 31 schools and academies are located in three regional hubs: New York, DC Metro Area, and the CA Bay Area. Throughout the year, each regional hub provides opportunities for peer learning and strategic collaboration starting with our regional Summer Institutes at the beginning of the school year.

"Thank you very much for providing such collaborative and productive spaces to innovate and create with freedom, support and passion!" - Internationals Network Educator

SCHOOLS AND DISTRICTS

Internationals provides targeted leadership and instructional support to Internationals schools and academies through coaching, strategic planning and professional development workshops. In addition, Internationals partners with school districts and community organizations to design and implement new schools and academies that serve recent immigrant and refugee multilingual learners.

"I feel like I just hit the jackpot for the year's best teacher toolbox kit. I feel more inspired to teach now. This was one of the best PDs I have ever been to. I can't wait to use all of these resources" - NYC Area Educator

- + We provide over 5,000 hours of Professional Development to educators & school leaders each year.
- + 90% of PD participants feel more prepared to meet the needs of MLLs.
- + 94% of PD participants report the resources and activities are relevant to their work.



Schools & Academies

Internationals Network is comprised of 31 schools and academies located across the United States. Our network is a collaboration between districts and other education partners to design, develop, and support Internationals schools specifically for newcomer, multilingual learner youth.

CALIFORNIA

Internationals Network Academy at Helen Bernstein High School

Internationals Network Academy at Van Nuys High School

Belmont International Academy

Helms International Academy

Oakland International High School

Richmond High International Academy

San Francisco International High School

MARYLAND

International High School at Langley Park

International High School at Largo

VIRGINIA

Francis Hammond International Academy

T. C. Williams International Academy

WASHINGTON D.C.

International Academy at Cardozo

International Academy at Roosevelt

NEW YORK

Lafayette International Community High School

NEW YORK CITY

Brooklyn International High School

Bronx International High School

Claremont International High School

Crotona International High School

ELLIS Prep Academy

Flushing International High School

International Community High School

International High School for Health Sciences

International High School at LaGuardia Community College

International High School at Lafayette

International High School at Prospect Heights

International High School at Union Square

Manhattan International High School

Pan American International High School at Elmhurst

Pan American International High School at Monroe

South Bronx International Middle School

NEW JERSEY

Passaic International Academy

LEARN MORE

Student Demographics

Students attending Internationals' schools are newcomers who have been in the country for four years or less at their time of admission, score at the lowest levels on English language proficiency tests, and are overwhelmingly low income. Our students come from over 130 countries, and represent a multitude of racial and ethnic groups, with over 100 native languages spoken in our schools.



STAFF LEADERSHIP

- + **Lara Evangelista**
Executive Director
- + **Dennis Caindec, Ed.D.**
Director of School Support, NY Region
- + **Dolan Morgan**
Director of Professional Development Services
- + **Genna Robbins**
Director of New School Development
- + **José Jiménez**
Director of Finance & Operations
- + **Liliana Vargas**
Director of Development & Communications
- + **Linda Le**
Director of School Support, Bay Area
- + **Marguerite Lukes, PhD**
Director of Research & Innovation
- + **Nancy Rosas**
Director of School Support, DMV Region

BOARD OF DIRECTORS

- + **Lara Evangelista, President**
Executive Director
- + **Alvin Loshak, Chair**
Balyasny Asset Management L.P.
- + **Billy Leung, Treasurer**
Moody's Corporation
- + **Claire E. Sylvan, Ed.D.**
Internationals Network
- + **Deborah North**
Cleary Gottlieb Steen & Hamilton LLP
- + **Gitte Peng, Secretary**
Queens Library
- + **Jorge Ruiz de Velasco**
John W. Gardner Center, Stanford University
- + **Oliver Frankel**
Bilateral Risk Services
- + **Tamara Butler Battaglini**
Consultant

DISTRICT PARTNERS

- Alexandria City Public Schools
- Buffalo Public Schools
- District of Columbia Public Schools
- Los Angeles Unified School District
- New York City Department of Education
- Oakland Unified School District
- Passaic Public Schools
- Prince George's County Public Schools
- San Francisco Unified School District
- West Contra Costa Unified School District



LET'S CONNECT

[VIEW WEBSITE](#)

[EMAIL](#)

